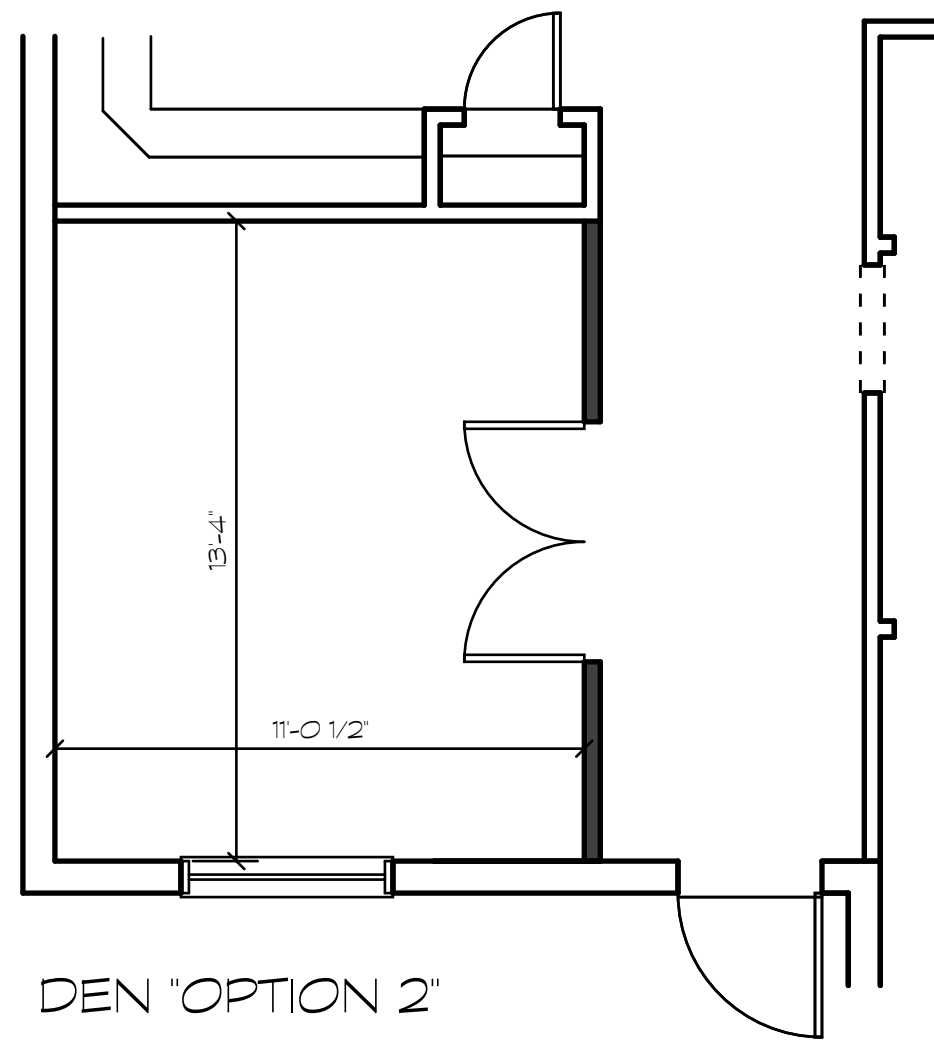
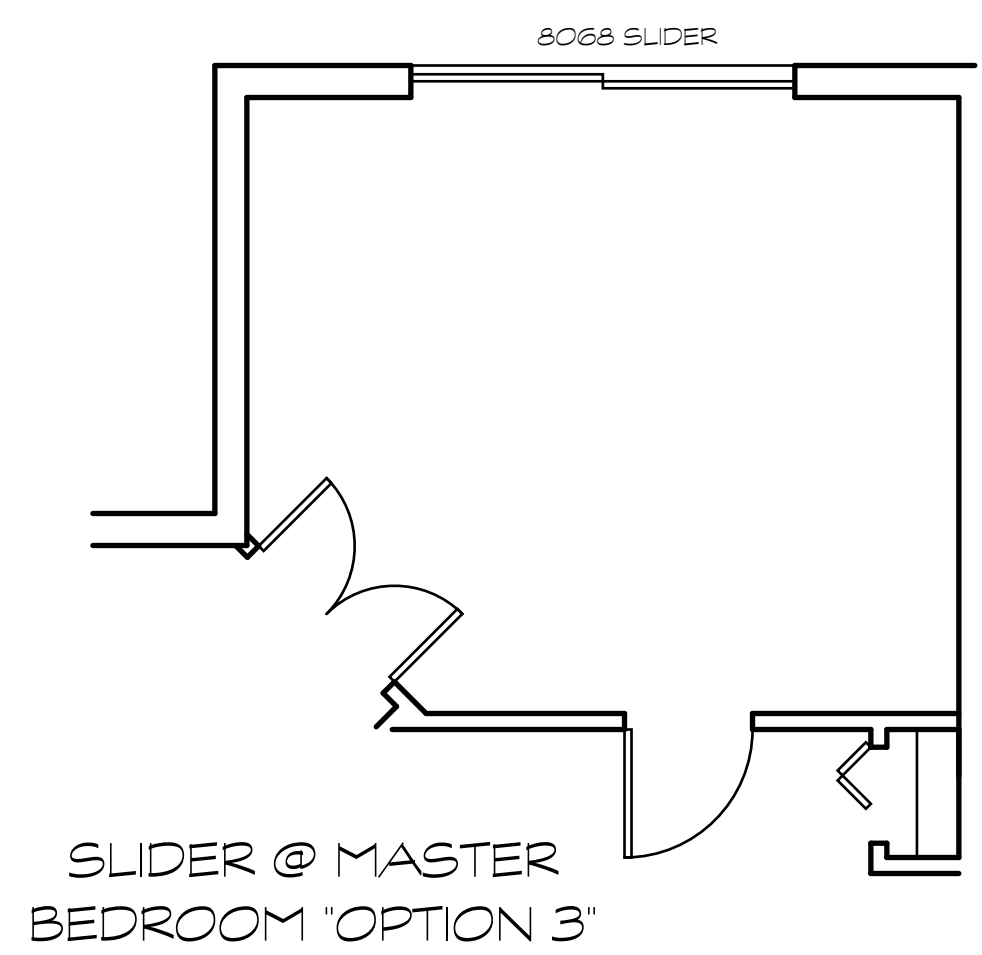


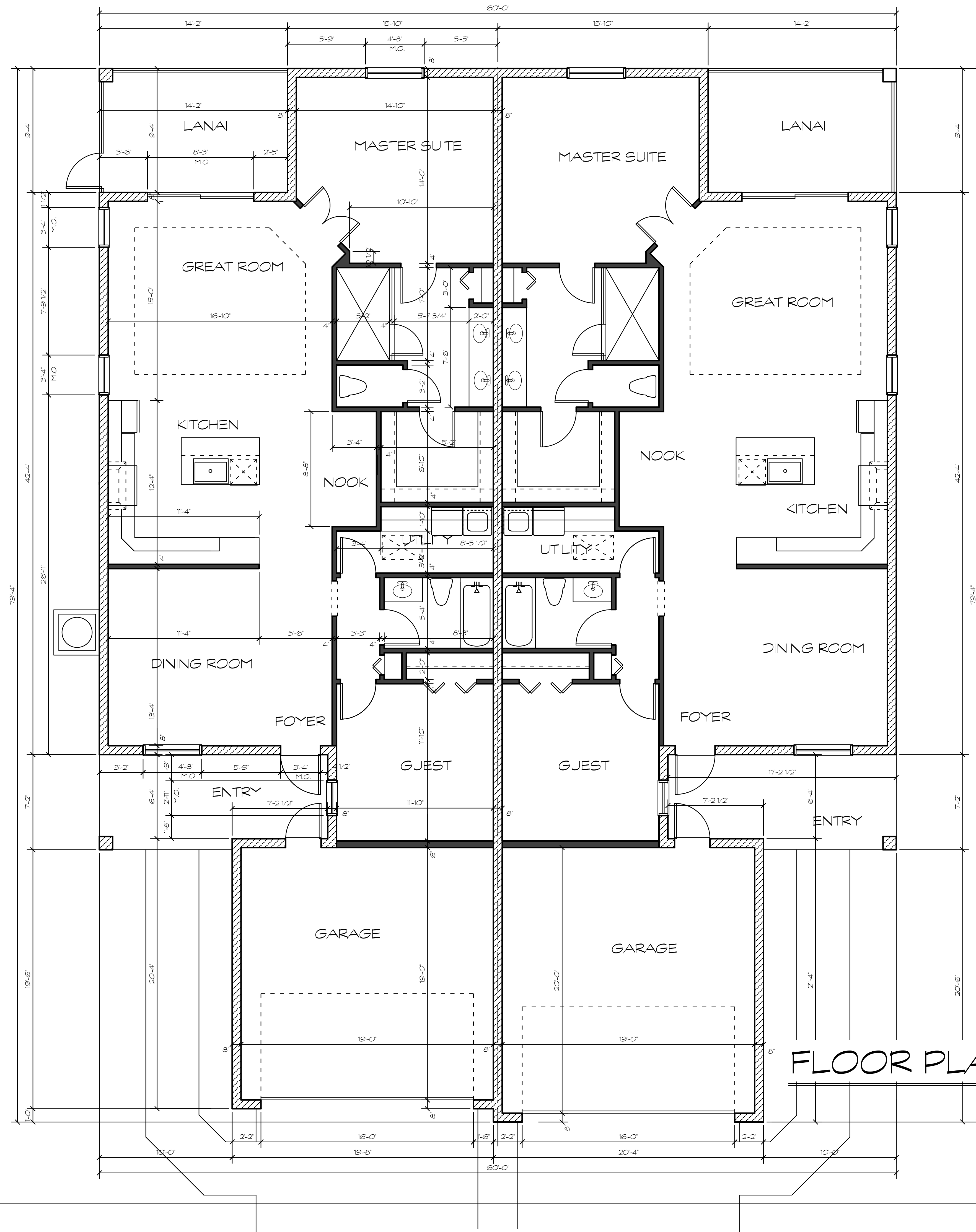
GUEST SUITE "OPTION 1"



DEN "OPTION 2"



SLIDER @ MASTER BEDROOM "OPTION 3"



AREA TABULATION (PER SIDE)

LIVING AREA	1,549 SQ. FT.
ENTRY	116 SQ. FT.
GARAGE	403 SQ. FT.
LANAI	133 SQ. FT.
TOTAL	2,201 SQ. FT.

FLOOR PLAN

SC: 1/4" = 1'-0"

WRITTEN DIMENSIONS IN THESE DRAWINGS SHALL HAVE PRECEDENCE OVER ALL DIMENSIONS SHOWN GRAPHICALLY AND BE RESPONSIBLE FOR ALL DIMENSIONS AND CONDITIONS OF THE JOB AND DESIGNER MUST BE NOTIFIED IN WRITING OF ANY VARIATION FROM THE DIMENSIONS, CONDITIONS AND SPECIFICATIONS SHOWN BY THESE DRAWINGS. ALL CONSTRUCTION SHALL BE IN ACCORDANCE WITH ALL APPLICABLE BUILDING CODES, STATE AND LOCAL CODES.

WAL DESIGN SERVICES
1400 S. BOYD BLVD.
CAPE CORAL, FLORIDA 33904

SOUTHERN ENGINEERING OF
FLORIDA
5222 SAW SNEAD LANE
NORTH FORK TOWNSHIP,
FLORIDA 33971

Revisions:

JOB #

Date:

10.24.2016

BROOKFIELD TWIN VILLA
"VILLAS @ CAUSEWAY KEY"

Sheet Number:

A-1